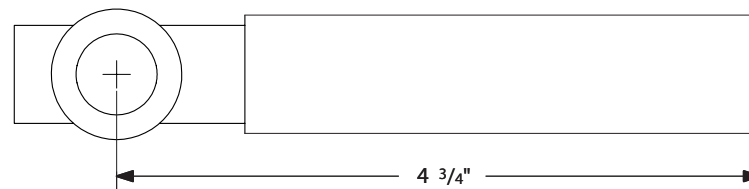
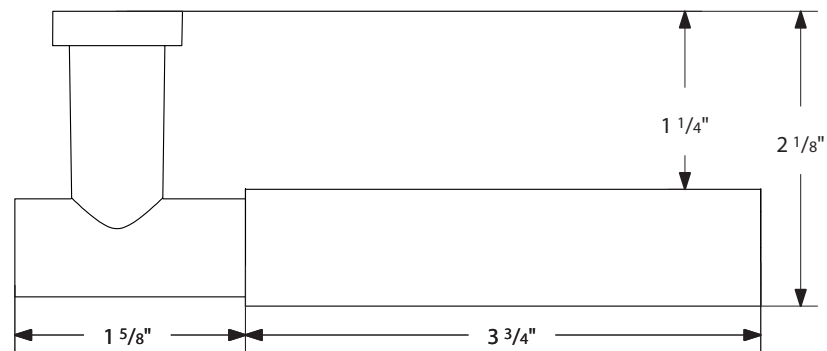


Door Thickness Specifications

- Standard Door Thickness: 1 $\frac{1}{4}$ " - 1 $\frac{3}{4}$ "
- Standard Components:
 - Privacy Pin (for privacy sets)
 - Inside Passage Half Spindle
 - 1 $\frac{1}{2}$ " Rosette Screws
 - Full-Lip Strike Plate

- **Extended** Door Thickness: 1 $\frac{7}{8}$ " - 2 $\frac{1}{2}$ "
- Extended Components:
 - Privacy Pin w/ Extension (for privacy sets)
 - Long Inside Passage Half Spindle
 - 2" Rosette Screws + 2 $\frac{1}{2}$ " Screws
 - Extended Full-Lip Strike Plate

- **Extended** Door Thickness: 2 $\frac{5}{8}$ " - 3"
- Extended Components:
 - Privacy Pin w/ Extension (for privacy sets)
 - Extra Long Inside Passage Half Spindle
 - 3" Rosette Screws
 - Extended Full-Lip Strike Plate

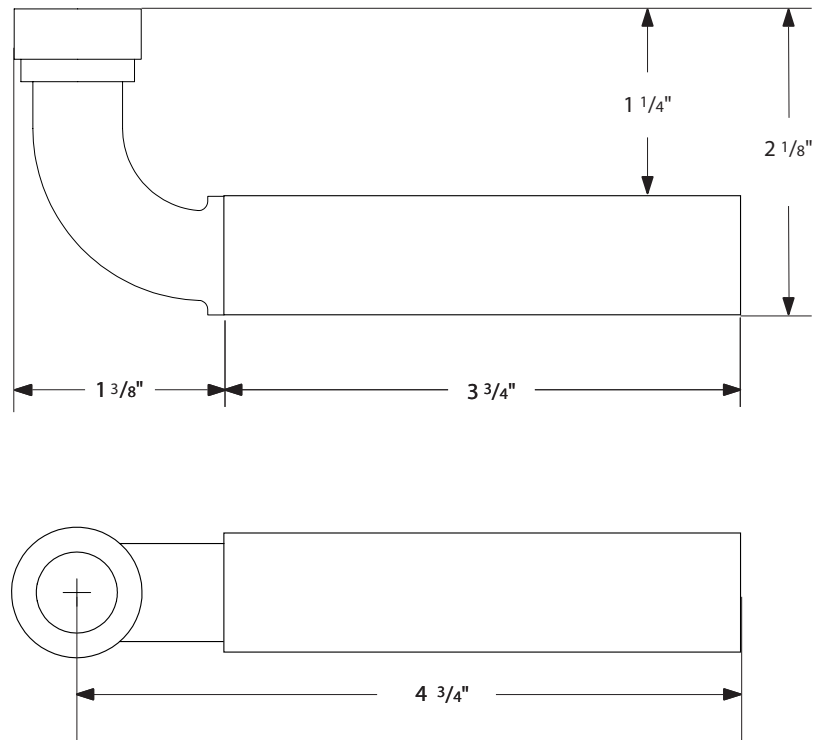


Door Thickness Specifications

- Standard Door Thickness: 1 $\frac{1}{4}$ " - 1 $\frac{3}{4}$ "
- Standard Components:
 - Privacy Pin (for privacy sets)
 - Inside Passage Half Spindle
 - 1 $\frac{1}{2}$ " Rosette Screws
 - Full-Lip Strike Plate

- **Extended** Door Thickness: 1 $\frac{7}{8}$ " - 2 $\frac{1}{2}$ "
- Extended Components:
 - Privacy Pin w/ Extension (for privacy sets)
 - Long Inside Passage Half Spindle
 - 2" Rosette Screws + 2 $\frac{1}{2}$ " Screws
 - Extended Full-Lip Strike Plate

- **Extended** Door Thickness: 2 $\frac{5}{8}$ " - 3"
- Extended Components:
 - Privacy Pin w/ Extension (for privacy sets)
 - Extra Long Inside Passage Half Spindle
 - 3" Rosette Screws
 - Extended Full-Lip Strike Plate



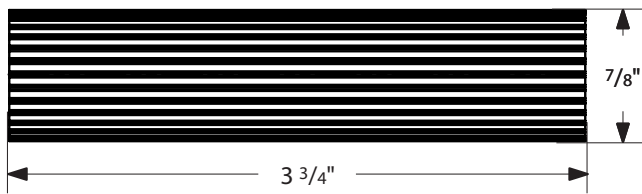
Door Thickness Specifications

- Standard Door Thickness: 1 $\frac{1}{4}$ " - 1 $\frac{3}{4}$ "
- Standard Components:
 - Privacy Pin (for privacy sets)
 - Inside Passage Half Spindle
 - 1 $\frac{1}{2}$ " Rosette Screws
 - Full-Lip Strike Plate

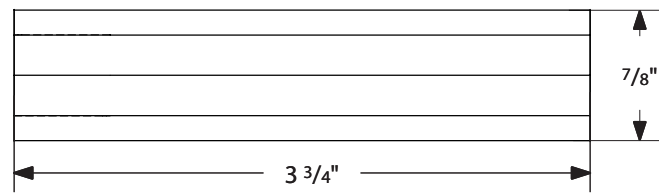
- **Extended** Door Thickness: 1 $\frac{7}{8}$ " - 2 $\frac{1}{2}$ "
- Extended Components:
 - Privacy Pin w/ Extension (for privacy sets)
 - Long Inside Passage Half Spindle
 - 2" Rosette Screws + 2 $\frac{1}{2}$ " Screws
 - Extended Full-Lip Strike Plate

- **Extended** Door Thickness: 2 $\frac{5}{8}$ " - 3"
- Extended Components:
 - Privacy Pin w/ Extension (for privacy sets)
 - Extra Long Inside Passage Half Spindle
 - 3" Rosette Screws
 - Extended Full-Lip Strike Plate

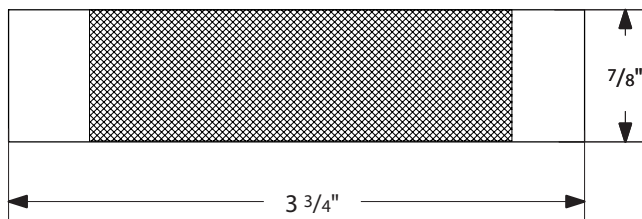
STRAIGHT KNURLED (SK)



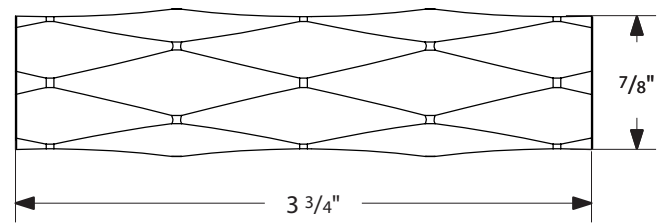
FACETED (FA)



KNURLED (KN)



TRIBECA (TR)



WHITE MARBLE (MRWH) / HAMMERED (HA) / LIGHT TERRAZZO (TZLT)

